

# CERTIFICATE OF LOCATION OF GOVERNMENT CORNER

EAST QUARTER \_\_\_\_\_ Corner of Section 34 , Township 108N , Range 39W

5th Principal Meridian, State of Minnesota, County of MURRAY

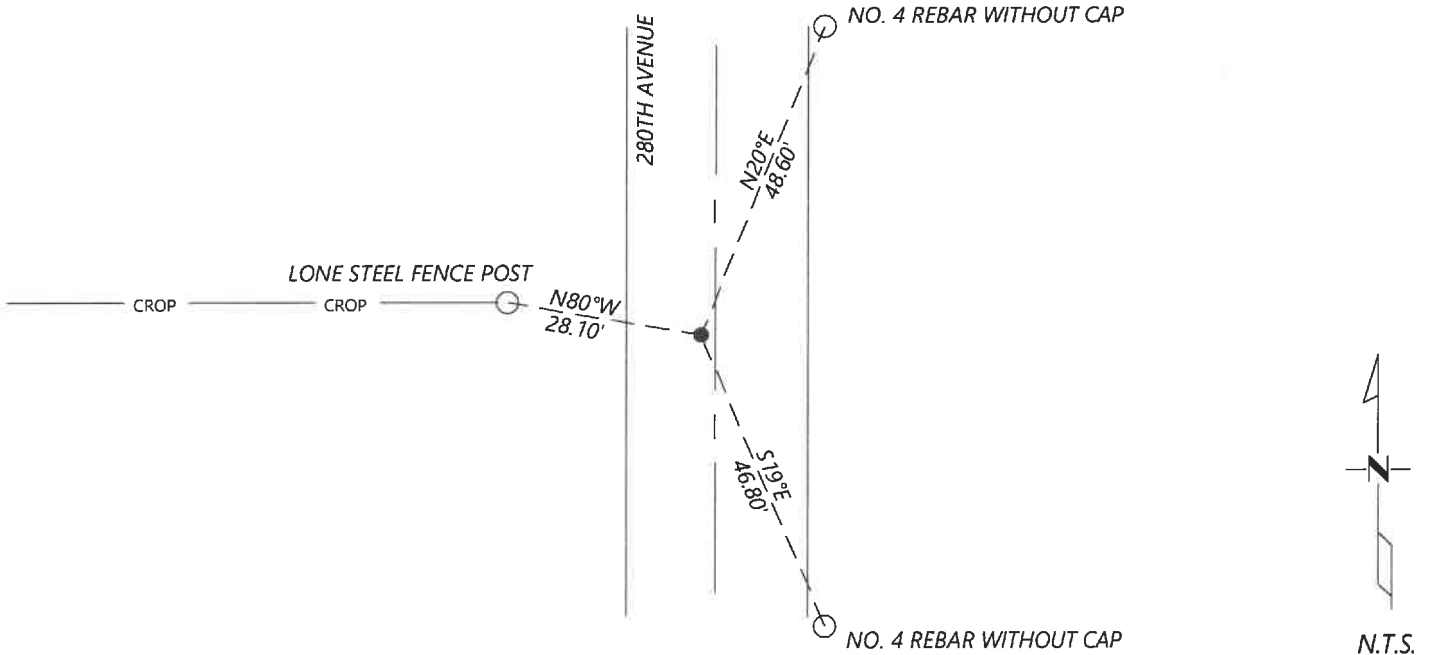
At the corner location shown on the sketch:

On 8/27/2020 found a 1" IRON PIPE WITH YELLOW PLASTIC CAP "ZIESKE LS 23008" DOWN 0.2FT  
DATE

left monument as found       lowered monument       removed monument (explain)

On \_\_\_\_\_ placed a \_\_\_\_\_  
DATE

### SKETCH OF REFERENCE TIES



Statement of evidence for this corner location is on back of this page.

I hereby certify that this document was researched and prepared by me or under my direct supervision and that I am a licensed Land Surveyor under the laws of the State of Minnesota.

Signature *Jim Fran*  
 Date 6/17/2021 License No. 45874

Title:

- Land Surveyor       Professional Engineer  
 County Surveyor       County Engineer

### OFFICE OF THE COUNTY RECORDER

County of Murray

I hereby certify that this document was filed in the Co.

Recorder's office at \_\_\_\_\_ .M. on the \_\_\_\_\_ day of \_\_\_\_\_ A.D. 20 \_\_\_\_\_

County Recorder *Karen Brown*  
 by JUN 22 2021, Deputy

DOCUMENT NO. \_\_\_\_\_

**Statement of Evidence:**

East Quarter Corner of Section 34, Township 108 North, Range 39 West, 5th Principal Meridian, Murray County, Minnesota.

1861 July, GLO Notes: Set post in mound.

N/A Survey record for section 35 does not show the original government corner was found. A distance of 2652.0ft is shown to the Northwest and Southwest section corners.

2008 November, Corner certificate by Perry Zieske shows that he excavated and found a 10x10" stone. He placed a 1" iron pipe with cap #23008. He lists the Murray County coordinates: N: 197829.87 E: 569353.32

2020 September, Westwood Professional Services searched and found an iron with cap #23008. Coordinates fit those listed by Ziekse in 2008. I accepted the found monument and set reference ties.

Analysis of the recovered data, field evidence and survey measurements, indicates that the monument found is the correct perpetuation of this corner. For additional information concerning this corner please contact Westwood Professional Services.